

PART OF THE N.W. 1/4 OF SECTION 33, T.7N., R.1W., S.L.B. & M.
WILLOWBROOK SUBDIVISION NO. 2 AMENDED PLAT

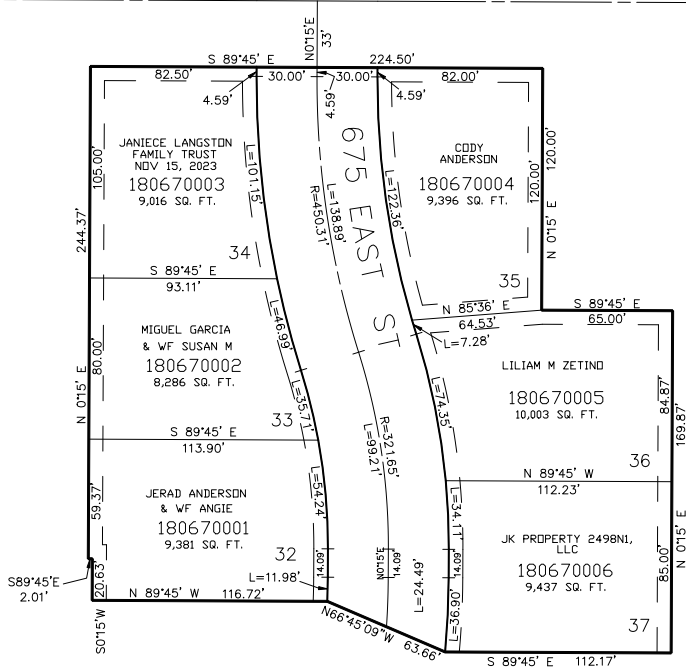
TAXING UNIT: 10

LOTS 32 – 37
IN NORTH OGDEN CITY
SCALE 1" = 50'

SEE PAGE 42

2550 NORTH STREET

SEE PAGE 42



SEE PAGE 42

SEE PAGE 65

7' UTILITY & DRAINAGE EASEMENTS EACH
SIDE OF PROPERTY LINES AS INDICATED
BY DASHED LINES EXCEPT AS OTHERWISE
SHOWN.

FOR COMPLETE ENG DATA SEE
ORIGINAL DEDICATION PLAT IN
BOOK 25, PAGE 53 OF RECORDS.